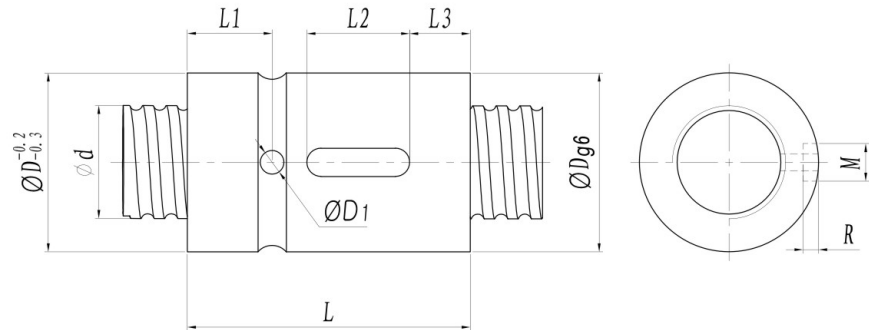


型号 (TYPE) : WCI

转造级库存螺杆系列 (Stock Rolld Ball Screw Series)



单位 (Unit) : mm

I: 导程 Lead Da: 珠径 Ball Dia. n: 珠圈数 Number of Circuits

Ca: 动额定负荷 Basic Dynamic Rating Load (Kgf)

Coa: 静额定负荷 Basic Static Rating Load (Kgf)

型号	滚珠丝杆, 螺母基准数据 Dimensions													
Model No.	d	l	Da	D	L	L1	L2	L3	D1	M	R	n	Ca	Coa
WCI0802-3	7.5	2	1.588	16	22	4	8	5	2	3	1.5	3	210	265
WCI0802.5-3		2.5	1.588	16	17	5	6	5	2	3	1.5	3	220	280
WCI1202-3	11.5	2	1.588	20	25	6	10	4.5	2.5	3	1.5	3	330	380
WCI1204-3	11.4	4	2	22	30	6	12	8	2.5	3	1.5	3	350	400
WCI1205-3		5	2	22	28	6	12	8	2.5	3	1.5	3	380	580
★ WCI1210-2		10	2	22	25	6	10	5	2.5	3	1.5	2	250	360
WCI1604-3	15.3	4	2.381	28	38	8	15	10	3	3	1.5	3	435	920
★ WCI1605-3	15	5	3	28	42	8	15	10	3	4	2.5	3	765	1320
WCI1610-3		10	3	30	45	10	18	10	3	4	2.5	3	960	1230
★ WCI1616-2		16	3	30	32	7	15	5	3	4	2.5	2	630	1010
WCI2004-3	19.5	4	2.381	33	40	9	19	6	3.5	5	3	3	600	1010
WCI2005-3	19	5	3	35	42	9	20	6	3.5	5	3	3	1430	2150
WCI2010-3	19.35	10	3.175	36	52	10	20	10	3.5	5	3	3	1050	1770
WCI2020-2	19.4	20	3.5	37	41	9	20	6	3.5	5	3	2	910	1210
WCI2504-3	24.3	4	2.381	38	40	9	15	8	3.5	5	3	3	610	1040
★ WCI2505-3	24	5	3	38	45	10	20	7	3.5	5	3	3	1590	2720
WCI2510-3	24.5	10	3.969	42	60	10	20	10	3.5	5	3	3	1120	2420
WCI2525-2	24.1	25	3.5	42	47	10	20	10	3.5	5	3	2	1010	1510
★ WCI3205-4	31.6	5	3.5	48	50	10	20	10	4	5	3	4	2160	4000
WCI3210-3	31.6	10	5.556	52	79	10	30	10	4	5	3	3	2550	4690
WCI3220-4	31	20	3.969	55	70	10	30	10	4	5	3	4	2295	3706
WCI3232-2	31	32	3.969	50	58	10	30	10	4	5	3	2	1340	2200
WCI4005-5	39.58	5	3.5	56	55	10	25	10	4	6	3.5	5	2910	6410
★ WCI4010-3	39.51	10	7.144	63	70	12	30	10	4	6	3.5	3	3910	9520
WCI4020-3	38	20	6	65	90	12	30	10	4	6	3.5	3	3790	6280
WCI4040-2	40	40	6.35	68	70	12	30	10	4	6	3.5	2	2550	4030
WCI5005-5	49	5	3.5	68	60	12	25	10	4	6	3.5	5	3150	8030
WCI5010-4	49.31	10	7.144	75	80	13	30	10	4	6	3.5	4	4340	9070
WCI5020-3	48.15	20	6.35	78	91	13	30	10	4	6	3.5	3	4780	8750
WCI5040-2	48	40	6.5	76	71	13	30	10	4	6	3.5	2	3210	5580
WCI6310-4	62.55	10	7.144	88	95	15	30	10	4	6	3.5	4	7400	17860
WCI6320-3	62.55	20	7.144	95	96	15	30	10	4	6	3.5	3	5320	11210
WCI8010-4	80	10	7.144	105	100	15	35	10	6	8	4.5	4	8440	22710
WCI8020-4	80	20	12.7	125	155	20	40	10	6	8	4.5	4	15226	35749

备注: 有标注★记号者可制作左旋螺纹

Note: with sign ★ can produce left helix