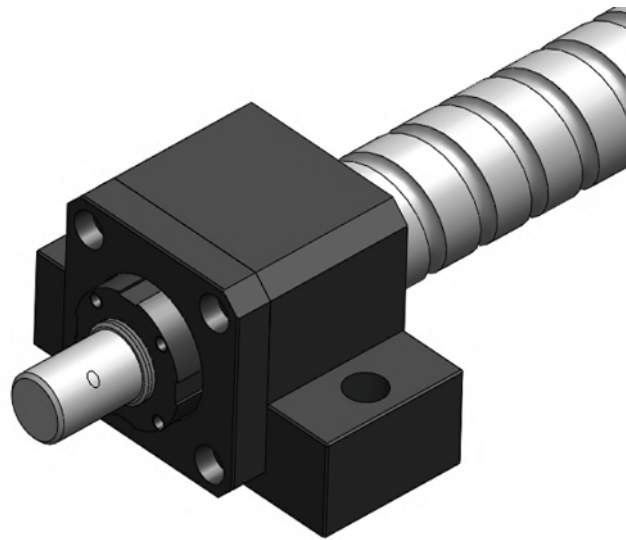


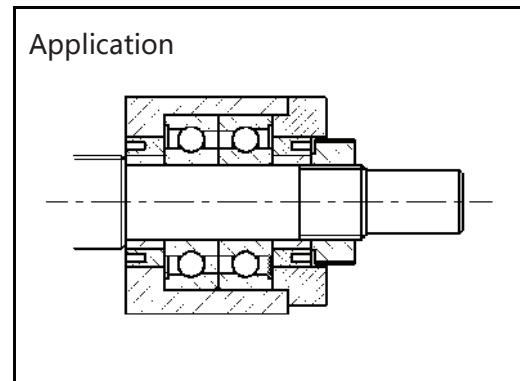
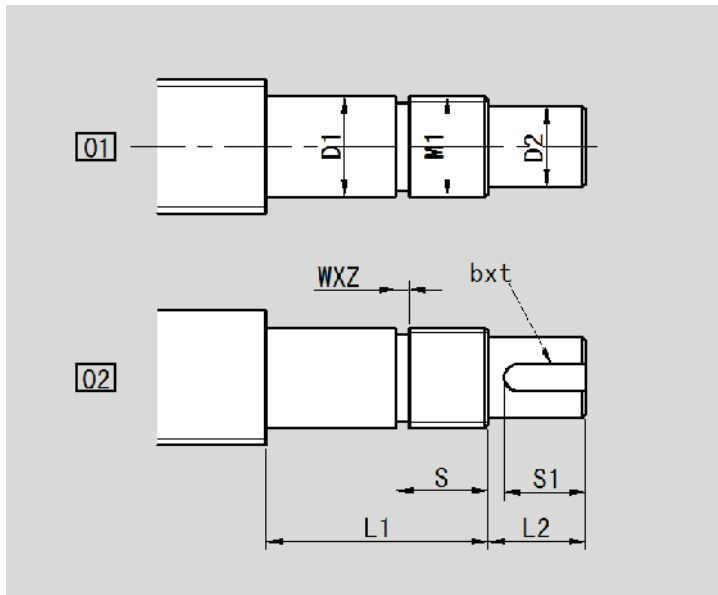
Screw Ends Form

--Form 01-02

--Supported end



Form	Ball screw size		L1	D1	L2	D2 h7	S	M1
	d ₀	l						
01	8	2.5	28	6 ^{-0.005} _{-0.012}	8	4	8	M6X0.75
	12	4/5/10	32	8 ^{-0.005} _{-0.012}	9	6	10	M8X1
	12	4/5/10	36	10 ^{-0.005} _{-0.012}	15	8	11	M10X1
	16	4/5/10/16	36	12 ^{-0.005} _{-0.012}	15	10	11	M12X1
	20	4/5/10/20	47	15 ^{-0.005} _{-0.014}	20	12	13	M15X1
	20	4/5/10/20	58	17 ^{-0.005} _{-0.014}	23	15	15	M17X1
	25	4/5/10/25	62	20 ^{-0.005} _{-0.014}	25	17	17	M20X1
	32	5/10/20/32	76	25 ^{-0.005} _{-0.014}	30	20	20	M25X1.5
	40	5/10/20/40	72	30 ^{-0.005} _{-0.015}	38	25	25	M30X1.5
	50	5/10/12/20/40	93	40 ^{-0.005} _{-0.015}	50	35	35	M40X1.5
02	16	4/5/10/16	36	12 ^{-0.005} _{-0.012}	15	10	11	M12X1
	20	4/5/10/20	47	15 ^{-0.005} _{-0.014}	20	12	13	M15X1
	20	4/5/10/20	58	17 ^{-0.005} _{-0.014}	23	15	15	M17X1
	25	4/5/10/25	62	20 ^{-0.005} _{-0.014}	25	17	17	M20X1
	32	5/10/20/32	76	25 ^{-0.005} _{-0.014}	30	20	20	M25X1.5
	40	5/10/20/40	72	30 ^{-0.005} _{-0.015}	38	25	25	M30X1.5
	50	5/10/12/20/40	93	40 ^{-0.005} _{-0.015}	50	35	35	M40X1.5



Unit : mm

Ball screw size	Keyway	b	t	Thread undercut ring		End support block				
				w	φz	FK	EK	AK	BK	
d ₀ l	S1	P9	+0.1							
8 2.5	-	-	-	1.5	5	FK06	EK06	-	-	
12 4/5/10	-	-	-	2	7	FK08	EK08	-	-	
12 4/5/10	-	-	-	2	8	FK10	EK10	AK10	-	
16 4/5/10/16	-	-	-	2	10	FK12	EK12	AK12	-	
20 4/5/10/20	-	-	-	2	13	FK15	EK15	AK15	-	
20 4/5/10/20	-	-	-	2	15	FK17	-	-	-	
25 4/5/10/25	-	-	-	2	18	FK20	EK20	AK20	-	
32 5/10/20/32	-	-	-	3	23	FK25	-	-	-	
40 5/10/20/40	-	-	-	3	28	FK30	-	-	-	BK30
50 5/10/12/20/40	-	-	-	3	38	-	-	-	-	BK40
16 4/5/10/16	12	3	1.8	2	10	FK12	EK12	AK12	-	
20 4/5/10/20	17	4	2.5	2	13	FK15	EK15	AK15	-	
20 4/5/10/20	20	5	3	2	15	FK17	-	-	-	
25 4/5/10/25	21	5	3	2	18	FK20	EK20	AK20	-	
32 5/10/20/32	25	5	3	3	23	FK25	-	-	-	
40 5/10/20/40	32	8	4	3	28	FK30	-	-	-	BK30
50 5/10/12/20/40	45	8	4	3	38	-	-	-	-	BK40