

Screw-in single nut type G

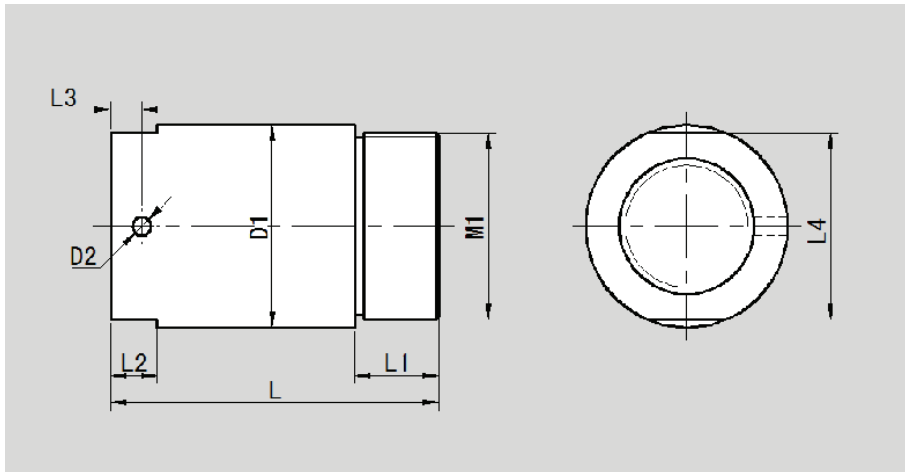


do: Nominal diameter

l : Lead

i : Number of track turns

Size doxl-i	dyn. load Ca (KN)	stat. load Coa (KN)	D1 h10	D2	M1
12X4-3	3.5	4	25	3	M20X1
16X4-3	4.35	9.2	32	3	M30X1.5
16X5-3	7.65	13.2	32	3	M30X1.5
20X4-4	6	10.1	38	3	M35X1.5
20X5-4	14.3	21.5	38	3	M35X1.5
25X4-4	6.1	10.4	42	3	M40X1.5
25X5-4	15.9	27.2	42	4	M40X1.5
32X5-4	21.6	40	52	4	M48X1.5
32X10-4	25.5	46.9	52	4	M48X1.5
40X5-5	29.1	64.1	58	4	M56X1.5
40X10-5	33.8	69.3	65	4	M60X2
50X5-5	31.5	80.3	78	4	M72X2
50X10-6	43.4	90.7	78	4	M72X2
63X10-6	74	178.6	92	5	M85X2
80X10-6	84.4	227.1	120	5	M110X2



Unit :mm

Size doxl-i	L	L1	L2	L3	L4	Part number
12X4-3	34	10	6	5	23	LL1204G-0
16X4-3	58	16	6	5	30	LL1604G-0
16X5-3	58	16	6	5	30	LL1605G-0
20X4-4	58	16	10	5	35	LL2004G-0
20X5-4	58	16	10	5	35	LL2005G-0
25X4-4	58	16	10	5	39	LL2504G-0
25X5-4	64	17	10	6	39	LL2505G-0
32X5-4	66	19	12	6	48	LL3205G-0
32X10-4	85	19	12	6	48	LL3210G-0
40X5-5	68	19	12	6	54	LL4005G-0
40X10-5	106	27	12	6	61	LL4010G-0
50X5-5	100	29	12	6	73	LL5005G-0
50X10-6	118	29	12	6	73	LL5010G-0
63X10-6	118	29	15	8	87	LL6310G-0
80X10-6	126	34	15	8	115	LL8010G-0